

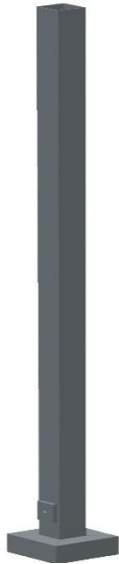
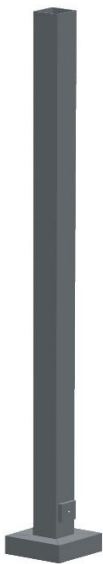
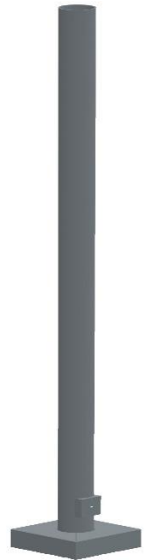
# Poles By Shape

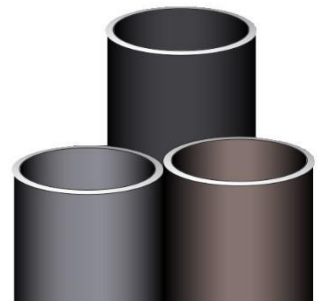
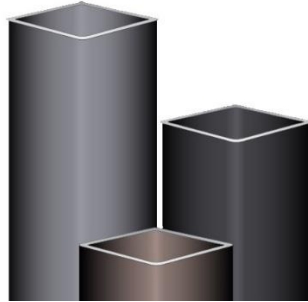
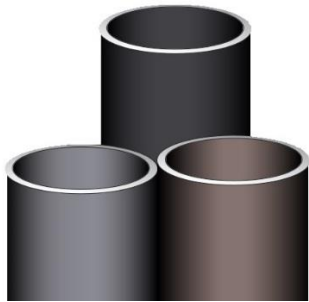
Click on the image to find the right pole size for the domain that will be illuminated or for more information about pole templates

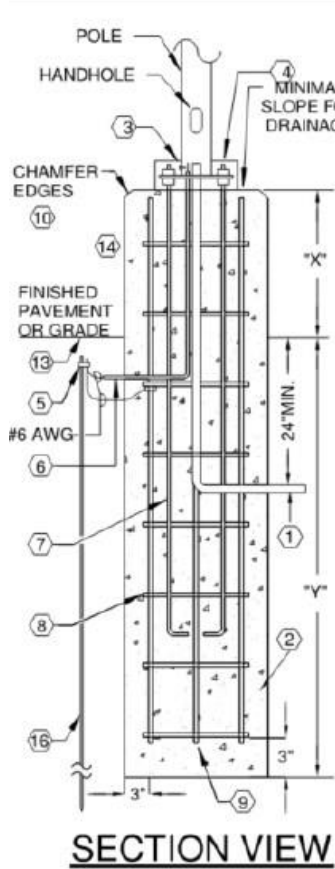
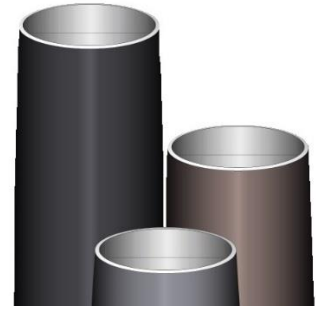
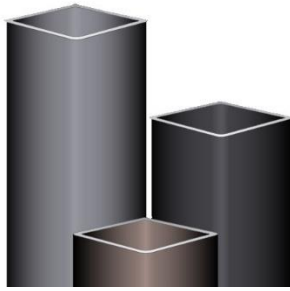
## Speed Template



## 7'-60' Poles





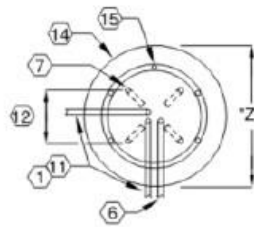


**SECTION VIEW**



**KEYED NOTES:**

1. PROVIDE 1" MINIMUM SCHEDULE 40 ELECTRICAL PVC CONDUIT. BACKFILL WITH EXCAVATED OR BORROWED MATERIAL. MATERIAL SHALL BE FREE OF ROCKS 1" DIAMETER AND LARGER. COMPACT TO 90% IN MAX 8" LIFTS OF LOOSE SOIL.
2. PROVIDE 3000# CONCRETE BASE (CLASS A FORMED SURFACE WHERE EXPOSED).
3. GROUND LUG IN BASE BOLTED TO BASE PLATE WITH MIN. #6 AWG SOLID COPPER CONDUCTOR.
4. BASE COVER OVER GALVANIZED STEEL WASHERS, NUTS & LOCKNUTS.
5. GROUND CLAMP, IRREVERSIBLE SPLICE.
6. 1/2" SCHEDULE 40 ELECTRICAL PVC FOR GROUND WIRE.
7. PROVIDE MINIMUM OF FOUR ANCHOR BOLTS, GALVANIZED STEEL.
8. PROVIDE #4 TIE LOOPS AT 3' FROM TOP AND BOTTOM AND +/- 12" C/C BETWEEN LOOPS.
9. (6) #6 VERTICAL REBARS - TIE VERTICAL BARS TO TIE LOOPS.
10. FOR BASES FLUSH WITH PAVEMENT, DO NOT PROVIDE CHAMFER. SEAL THE PERIMETER OF THE BASE TOP INSTEAD.
11. PROVIDE 24" MINIMUM RADIUS; EXTEND 3/4" MAXIMUM ABOVE FOUNDATION WITH NUMBER OF CONDUITS AS NEEDED, 1" MIN.
12. PROVIDE DIAMETER BOLT CIRCLE PER LUMINAIRE MANUFACTURER.
13. "X" AND "Y" DIMENSIONS ARE MINIMUM LENGTHS FROM THIS LINE. WHERE GRADE OR PAVEMENT IS SLOPED, "Y" IS FROM THE LOW SIDE OF THE SLOPE AND "X" IS FROM THE HIGH SIDE OF THE SLOPE.
14. PROVIDE ROUND CONCRETE BASE.
15. PROVIDE REBAR CAGE.
16. PROVIDE 5/8" X 10' GROUND ROD.



**PLAN VIEW**

POLE BASE DIMENSIONS			
POLE TYPE	"X"	"Y"	"Z"
AB4	30"	BELOW	24"

POLE HEIGHT	"Y" VALUE
< 13'-0"	4'-0"
13'-0" - 20'-0"	5'-0"
21'-0" - 30'-0"	6'-0"
31'-0" - 40'-0"	8'-0"

265100.00-08 - LIGHT POLE BASE DETAIL - ROUND